

 **BONAIRE**<sup>®</sup>  
The leaders in heating and cooling

Ducted Gas  
Heating



Product Range  
[www.bonaire.com.au](http://www.bonaire.com.au)



# Whole home heating



Bonaire® provides you with Peace of Mind

## Zoning

Bonaire zoning technology allows you to choose the rooms that you wish to heat

## Low Running Costs

Bonaire has a range of 3,4,5 and 6 star ducted gas heaters that can save you up to 30% on your energy bill

## Optional My Climate® by Bonaire Control

Optional "My Climate" by Bonaire control that enables you turn on your heater remotely and control your heater with your smart device

## Heats up Fast

Ducted gas heating is the fastest way to heat up your whole home

## State of the art controls

Bonaire uses advanced control technology. Our RF remote control has its own inbuilt thermostat so you can take the control anywhere in your home

## Multiple Thermostats

You can have up to 4\* different thermostat controls with Bonaire

## Reliable

For over 60 years Bonaire has been providing homes with state of the art, efficient and affordable heating systems

## How does Ducted Gas Heating Work?

Ducted gas heating is a whole of home solution that allows you to heat the whole house using just one system. The heating unit is usually installed in the roof space or outside the home.

The heating unit is connected to a network of ducts and outlets. The outlets are placed in your home in either the ceiling or the floor. The air from the outlets circulates throughout your home then passes through a return air grille and back through the heater to be warmed again. Your controller lets you set both the temperature and the rooms that you want to heat if you have zone motors connected.

## Bonaire Specialists

In order to ensure that your Bonaire system is correctly designed and installed we have a network of authorised and accredited specialist Dealers. These specialists undertake regular training to maintain their expertise in system requirements which will ensure your Bonaire heater is installed to the highest standards. Call 1300 Bonaire or log on to [www.bonaire.com.au](http://www.bonaire.com.au) to contact your nearest Bonaire specialist.

## Bonres® Unit Selection Guide

At Bonaire we understand that every home is different. That's why we have developed Bonres® sizing and design software that enables your Bonaire specialist dealer to accurately select the perfect Bonaire ducted gas heater for your home. After using the Bonres® unit selection guide and having the Bonaire ducted heater correctly installed and commissioned by a licensed Bonaire specialist, if the Bonaire unit does not perform to specification, Bonaire will repair or replace the Bonaire unit free of charge, or refund your money.



## Bonaire – the leaders in heating & cooling

As one of Australia's leading heating and cooling brands, Bonaire has been providing homes with state of the art, efficient and affordable heating systems for over 60 years. Using proven technology we create intelligent, user friendly systems that maximise energy efficiency whilst being economical to own and operate.

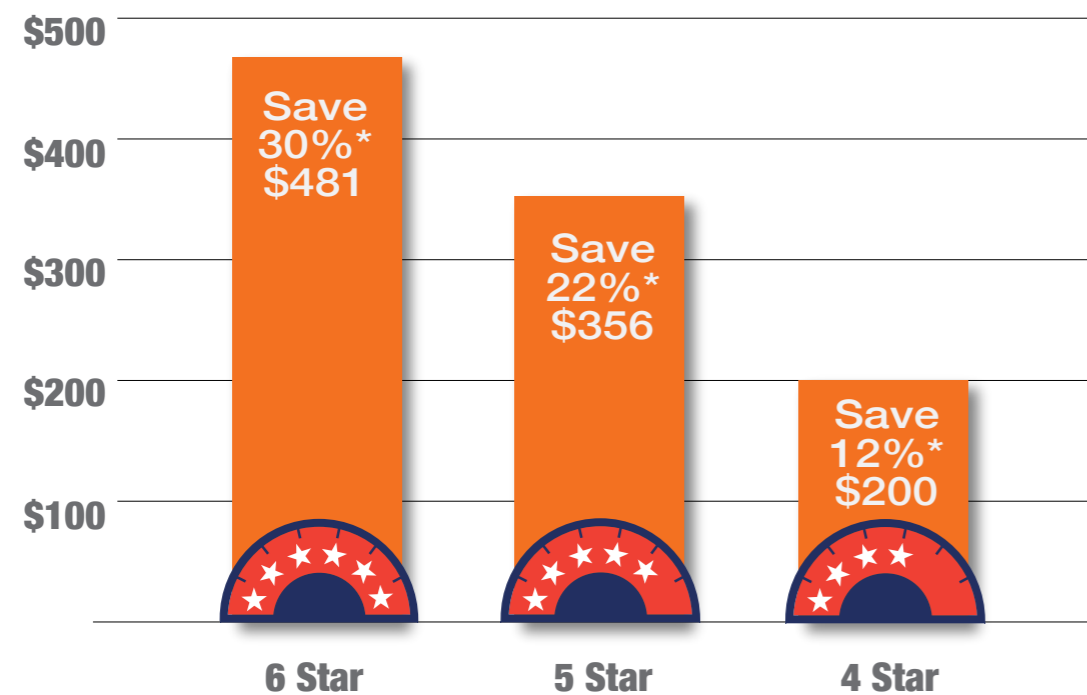
We are ISO9001 quality accredited and constantly strive to introduce product improvements and refinements to ensure that the Bonaire name is synonymous with quality and innovation. All Bonaire products are backed by our own company operated service division providing the highest levels of after sales service to our customers.



\* 4 Zones standard, individual zone motors supplied and installed by air conditioning retailer at additional cost.

# Which star rating should I choose?

All ducted gas heaters are supplied with an Energy Star rating label. These labels provide details of the amount of gas each unit will consume over a normal winter. It's an indicative guide that outlines the running cost of the heater in terms of annual energy usage. The more efficient the heater the higher the star rating. The higher the star rating the more money you can potentially save on running costs. On average an increase of one star means energy savings of approximately 10 percent



\* The running cost data used to determine these results is based on AS/NZS 5263.1.6:2020. This standard determines a house heat load of 0.2 Mega joules per hour per cubic meter of living area heated of 600 hours of operation (100 days at 6 hours per day). Savings are specifically based as a comparison with a three star ducted gas heater. Calculations for gas usage are based on the Average House Floor Area (with 2400mm ceiling) for new homes as published by the Australian Bureau of Statistics from a study commissioned by Commsec in 2013. The calculations were specifically based on the Annual Energy Consumption in accordance with the AGA Star ratings for Ducted Gas systems and using a gas cost of 1.6 cents per MJ/HR. Savings should be seen as a guide only as actual heating performance and therefore savings, may vary due to a number of factors including home construction and size, gas costs, heater usage, zoning and thermal insulation.

# Bonaire Zoning

## Reduce Your Energy Costs

The key benefit of zoning is that it allows you to heat selected areas in your home, saving on energy costs.

Available with Bonaire 4, 5 and 6 star units, Bonaire zoning allows you to have up to four integrated zones as standard, with the option to extend up to 4 integrated zones.

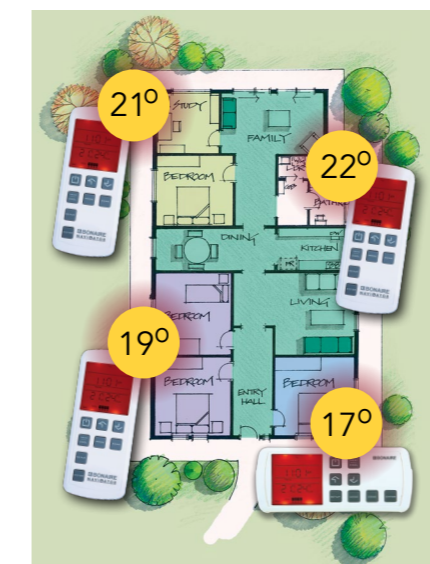
This enables you to turn on and off the zones that you have selected from your Navigator hard wired, remote control or your My Climate® by Bonaire control.

### Bonaire Zoning Features

- Integrated up to 4 zone control as standard\*
- Heat only the areas that you want to heat
- Save energy costs by switching off unused zones
- Switching off unused zones helps reach your unit reach set temperature faster
- Variable fan speeds can be set for each zone



\* 4 Zones standard, individual zone motors supplied and installed by air conditioning retailer at additional cost.



## Multiple thermostats give you complete control

Bonaire 4, 5 and 6 star heaters can operate up to 4\* Navigator controllers.

This means you can have 4 different temperatures settings in four different zones, keeping all of your individual family members comfortable or just heat only the zones you need.

Alternatively you can have one controller to heat your home to a uniform temperature.

\* 4 Zones standard, individual zone motors supplied and installed by air conditioning retailer at additional cost.

# Bonaire MB6

## The Ultimate in 6 star efficiency

If you are looking for the ultimate in efficiency and performance the Bonaire MB6 6 star ducted gas heater will provide you with the ultimate in heating comfort.

The MB6 uses a primary and secondary heat exchanger which combined gives you a six star energy efficiency rating. When you add this level of efficiency to Bonaire's predictive logic modulation system which modulates both the gas rate and the room air fan, you can achieve the ultimate in comfort without excessive energy bills.

The MB6 also has the ability to reduce the heating capacity to as low as 30%\* allowing you to further reduce your energy costs if you only want to heat a small area of your home.

The MB6 series also offers the choice of Navigator Wall Mounted Controller or the Navigator Radio Frequency (RF) Remote Controller. Both are fully programmable for automatic operation and capable of running up to 4 integrated zones.\*\* You can also operate your MB6 heater with the optional My Climate® by Bonaire control.

### Bonaire MB6 Features:

- 6 star efficiency rating – more heat for each dollar you spend.
- High efficiency four stage heat exchanger
- Predictive logic modulation that automatically adjusts the gas rate as your home reaches set temperature
- Modulating combustion fan for higher efficiency
- Auto adjusting room air fan that works in unison with the predictive logic modulation, further reducing energy bills
- Super quiet operation with fully insulated unit cabinet
- 4 zone control board as standard so you can heat only the rooms you need\*\*
- Universal internal/external unit
- Compatible with Bonaire Dual Cycle refrigerated airconditioning

### Warranty



The Bonaire MB6 Series Ducted Gas Heaters come with a 5 year parts and labour domestic warranty. Both the cabinet and parts are also covered by extensive warranties with a 10 year parts warranty on the burner. Ask your Bonaire dealer about the extended 7 year warranty



\* Subject to zoning and duct requirements

\*\*4 Zones standard. Zone motors supplied and installed by airconditioning retailer at additional cost.

# Bonaire MB5

## Compact with 5 star efficiency

The secret to the MB5's five star efficiency is its multi tube heat exchanger combined with a modulating gas valve which minimises gas usage, modulating combustion fan and modulating room air fan.

The advanced technology of gas valve modulation is able to match the load requirements of your home reducing its heating capacity as low as 30%\*.

This not only reduces gas consumption but also reduces electricity usage of the fan motor.

The MB5 series also offers the choice of Navigator Wall Mounted Controller or Navigator Radio Frequency (RF) Remote Controller. You can also operate your MB5 heater with the optional My Climate® by Bonaire control.

### Bonaire MB5 Features:

- 5 star energy efficiency rating
- Non condensing eliminating the need for a condensate drain
- Modulating gas valve automatically adjusts gas rate as the home approaches set temperature
- Modulating combustion fan for higher efficiency
- Auto adjusting variable speed room air fan further enhancing the benefit of modulation and energy savings
- Super quiet operation with fully insulated unit cabin
- Integrated four zone control standard, heat only the rooms you need when you need them\*\*
- Compatible with Bonaire Optima Dual Cycle refrigerated airconditioning
- Universal internal/external unit
- Selected models available in ULPG
- 5 year parts and labour warranty with 10 year parts warranty on the burner.
- 7 year warranty option



\* Subject to zoning and duct requirements

\*\* 4 Zones standard. Zone motors supplied and installed by airconditioning retailer at additional cost.



# Bonaire MB4

## The fully featured 4 star performer.

The MB4 achieves its four star efficiency with its multi tube heat exchanger combined with a modulating gas valve which minimises gas usage.

The MB4 is specifically designed to fit in small and compact spaces and offers the choice of Navigator Wall Mounted Controller or Navigator Radio Frequency (RF) Remote Controller. Both are fully programmable for automatic operation and capable of running up to 4 integrated zones.\*\* You can also operate your MB4 heater with the optional My Climate® by Bonaire control.



### Bonaire MB4 Features:

- 4 star energy efficiency rating
- Modulating gas valve automatically adjusts gas rate as the home approaches set temperature
- Auto adjusting variable speed room air fan further enhancing the benefit of modulation and energy savings
- Integrated four zone control standard, heat only the rooms you need when you need them\*\*
- Induced draft combustion for improved energy efficiency
- Compatible with Bonaire Dual Cycle refrigerated airconditioning.
- 5 year parts and labour warranty with 10 year parts warranty on the burner.
- 7 year warranty option
- Universal internal/external unit



\* Subject to zoning and duct requirements

\*\* 4 Zones standard. Zone motors supplied and installed by airconditioning retailer at additional cost.

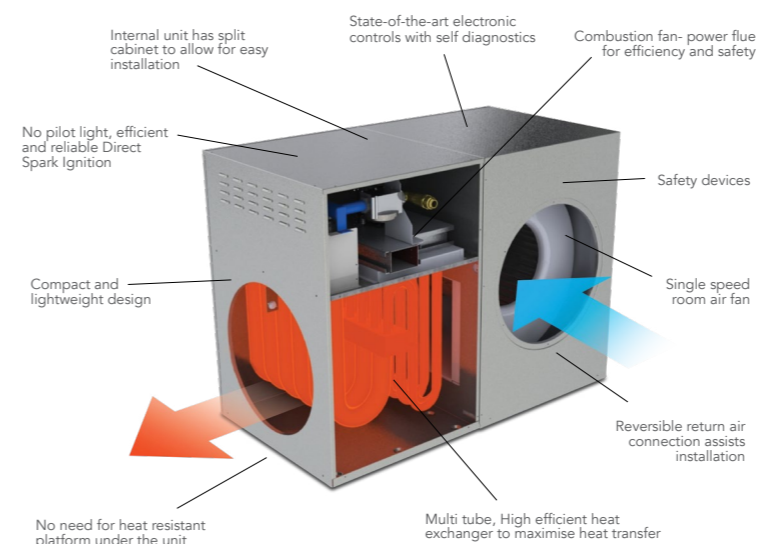
# Bonaire MB3

## The affordable 3 star value performer

The Bonaire MB3 heaters are a three star rated series designed as an efficient solid performing unit with numerous features and packaged at a very affordable price.

When installed as part of a ducted system the MB3 will provide effective and efficient whole of home heating to keep out the chills of winter.

All heaters are constructed with the Bonaire multi tube heat exchanger, electronic ignition and state of the art diagnostic control boards. Plus the heaters are supplied complete with the Bonaire Slimline Digital thermostat or the option of the Navigator wall mounted digital controller that allows you to preset four independent heating periods per day. With the Navigator you can just set and forget.



### Bonaire MB3 Features:

- Multi tube heat exchanger delivering a three star energy efficiency rating
- Induced draft combustion for improved performance and energy efficiency
- Electronic ignition eliminating the need for a pilot light
- Slimline Digital thermostat included with the unit
- Simple, easy stop start timer
- Efficient operation
- Engineered and constructed in Australia for Australian conditions
- Designed to fit in small compact roof spaces
- Easy installation
- Three year parts and labour warranty
- Upgrade option to the fully featured Navigator wall mounted control
- Interior or exterior models available



Wall Mounted Navigator Controller - upgrade option



Slimline digital thermostat. Standard controller for the MB3.

# My Climate<sup>®</sup> by Bonaire

## The latest technology in appliance control

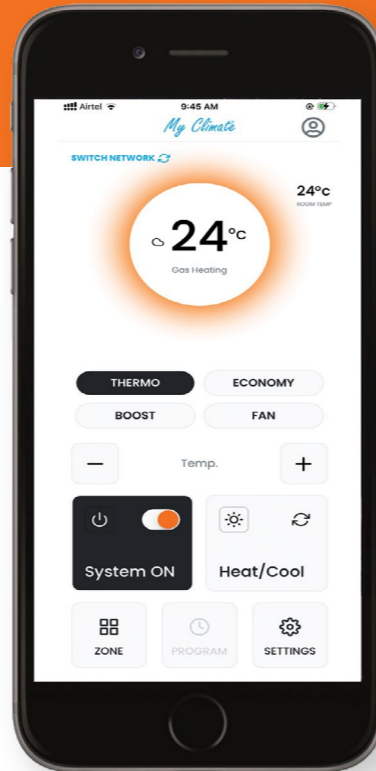
Bonaire's Optional My Climate<sup>®</sup> by Bonaire control allows you to control your Bonaire ducted gas heater, ducted evaporative cooler or dual cycle air conditioner from your Smart Device.

Compatible with most iPhone and Android<sup>™</sup> devices, once you have purchased and installed the My Climate<sup>®</sup> by Bonaire kit and downloaded the app, My Climate<sup>®</sup> allows you to control your system utilising your existing home Wi-Fi<sup>®</sup> network or remotely through your mobile network. Remote access allows you to turn on your system when you are at work or out so you can return home to comfort.

**My Climate<sup>®</sup> by Bonaire will control all Bonaire 4, 5 and 6 star ducted gas heaters, ducted evaporative coolers and dual cycle refrigerated air conditioners and can be purchased as an additional option.**

### My Climate<sup>®</sup> by Bonaire Features

- Wi-Fi<sup>®</sup> control that is compatible with both iPhone and Android<sup>™</sup> smart devices - iOS 12 and from the iPhone 5 up, Android<sup>™</sup> 5 lollipop or newer.
- Provides full unit control including temperature setting and zoning control when zones have been installed.
- Allows the naming of each zone to match the room set up in your home
- Utilises existing home Wi-Fi<sup>®</sup> network or mobile network.
- Remote access function allows you to turn on your appliance from work or when you are out
- Directly syncs with the main thermostat control
- My Climate<sup>®</sup> by Bonaire control requires installation of a Navigator<sup>®</sup> hard wired or remote wireless thermostat
- My Climate<sup>®</sup> by Bonaire is also now compatible with the voice activation devices, Google Assistant<sup>®</sup> and Amazon Alexa<sup>®</sup>.



# Controller Options

## Navigator<sup>®</sup> Wireless RF Remote Control

If you are after the latest in controls and technology, the Navigator wireless remote control is for you. This control allows you to operate the unit manually or in automatic where it will monitor and maintain comfort conditions for you. A built in thermostat means that wherever you go in your home the room temperature will be adjusted to the set temperature on the thermostat. All this without leaving the comfort of your armchair!



### Navigator Wireless Remote Features:

- Wireless radio frequency remote control
- Inbuilt thermostat temperature sensing
- Ideal for two storey homes – take your thermostat upstairs with you
- Up to 4 wireless remotes per home
- Large, clear and easy to read backlit LCD display
- Customised operational settings
- Optional controlling of multiple air conditioners
- Full 7 day x 4 event programmable control
- Integrated 4 zone control as standard\*
- Compatible with Bonaire Dual Cycle and Bonaire Evaporative coolers
- Diagnostics and error reporting

## Navigator<sup>®</sup> Wall Mounted Controller

The wall mounted Navigator controller has all of the features of the wireless remote, but is wall mounted. It will maintain comfort conditions and operation and allow setting changes from a fixed location.



### Navigator Hard Wired Features

- Multiple zone and thermostat option, up to 4 controllers\*\*
- Large, clear and easy to read backlit LCD display
- Customised operational settings
- Full 7 day x 4 event programmable
- Integrated 4 zone control as standard\*
- Compatible with Bonaire Dual Cycle and Evaporative coolers
- Diagnostics and error reporting

\* 4 Zones standard, individual zone motors supplied and installed by air conditioning retailer at additional cost.

\*\* Up to 2 wall mounted controllers or 1 wall mounted and up to 3 remote.

 **BONAIRE<sup>®</sup>**  
The leaders in heating and cooling

# Bonaire Rhino

## Replace your old outdoor heater

When you have had ducted gas heating in your home, especially when it is for many years, you will never want any other form of heating.

Unfortunately all things wear out with age and, as technologies and efficiencies advance, there comes a time when you need to look at replacing your old ducted heater.

If your old heater is an external model mounted on an air distribution base box then the Bonaire Rhino will suit many installations of this type. Bonaire Rhino has been specifically developed to provide a quick easy changeover for many of the old externally installed gas heaters.

Bonaire Rhino Features:

- Available in 3, 4 and 5 star energy efficiency ratings.
- Save on running costs with a more efficient heater.
- 4 and 5 star units come standard with predicative logic modulation and auto adjusting room air fan.
- Quick and simple changeover.
- Save on installation costs with gas connection and power connections usually in the same location as your old heater.
- If the air distribution base box does not need replacing, then the Bonaire Rhino will usually fit on the existing box.
- Upgrade your heater thermostat control at the same time to a new Slimline digital thermostat, wall mounted or remote Navigator control.
- Remote Navigator control will save you the hassle of having to run new cabling from your heater to your thermostat control.\*
- Compatible with My Climate® by Bonaire control.
- 4 zone control board as standard so you can heat only the rooms you need.\*\*
- 5 year parts and labour warranty.



\* Bonaire recommends that a Bonaire Rhino 4 and 5 star heater changeover installation is installed with a Navigator hard wired or remote control to enable modulation function

\*\* 4 Zones standard with 4 and 5 star units. Zone motors supplied and installed by air conditioning retailer at additional cost.

\*\*\* Zone dampers and motors supplied by installer at additional costs

# Bonaire – the year round choice for heating & cooling your home

Once you have chosen your Bonaire heating system why not combine it with some of the cooling options available from the Bonaire range.

## Bonaire Optima Dual Cycle® refrigerated air conditioning

The Bonaire systems have been perfectly matched to the Bonaire range of MB4, MB5 and MB6 heaters so that your heating and cooling system runs off the one controller and through the one common set of ductwork.

Bonaire Dual Cycle Features:

- The entire systems operation, programming and zoning is controlled by one single Navigator control or in conjunction with the optional My Climate® by Bonaire control
- Uncompromised constant heating performance for when it gets really cold outside
- Fully combined heating and cooling comfort via a single ducting system
- Zone control as standard – choose the rooms you want to heat and cool\*
- Integrated zoning control up to 4 zones standard
- Zoned refrigerated cooling\*
- 5 year parts and labour warranty on Bonaire dual cycle systems



\* System zoning is an option offered by the air conditioning contractor and are subject to individual customer needs and system design. Talk to your air conditioning contractor about a zoned system that best suits your lifestyle.

## Bonaire Evaporative Airconditioning

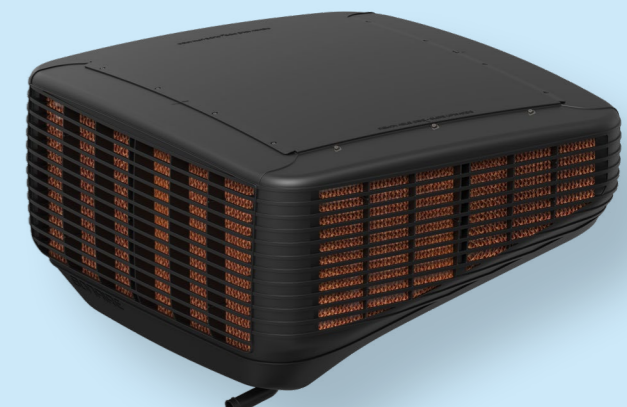
Your Bonaire 3, 4, 5 or 6 star unit can also be used in conjunction with a Bonaire Evaporative cooler.

A Bonaire evaporative cooling system is an economical way to cool your whole home.

In fact our ducted evaporative cooling systems offer significant savings on running costs compared to a standard ducted reverse cycle system.

The Bonaire evaporative cooler is operated from the same control as your Bonaire ducted heater and with the Navigator control you have many of the features that you enjoy with your gas heater.

You can even control both your Bonaire ducted gas heater and evaporative cooler with a My Climate® by Bonaire control.



# Optima L-Series

Designed with appearance in mind, without compromising quality. The indoor unit will seamlessly blend into any home with its smart modern design, complimented by its compact size.



## Optional Wi-Fi & Voice Control

To enable voice control you must first pair your L-Series to the smart climate app, follow the prompts to connect to your Amazon Alexa™ or Google Home™

\*Requires the purchase of a Wi-Fi kit at an additional cost



## Industry Leading 7-Year Warranty

Our philosophy is to provide our customers with the best quality product. This allows us to offer an industry leading 7 year warranty\* on our Optima L-Series range.



## Commitment to Environmental Sustainability

One of the biggest milestones in the air conditioner industry has been the introduction of R32. This refrigerant has a global warming impact that is one third lower than previous mainstream refrigerants whilst approximately delivering a 10% power reduction when compared to R22.



## Bonaire Specifications

| Bonaire MB3 Series<br>3 Star Rated Gas Heaters | MB3-14  | MB3-20  | MB3-25        | MB3-30   | MB3-30XA      |
|--|---------|---------|---------------|----------|---------------|
| Gas Type                                       | Natural | Natural | Natural       | Natural  | Natural       |
| Capacity                                       |         |         | Internal only |          | Internal only |
| Heat output kW/Hr (nominal)                    | 14      | 18.5    | 25            | 28       | 28            |
| Airflow @100pa                                 | 480     | 650     | 830           | 830      | 1050          |
| MegaJoules                                     | 60      | 80      | 100           | 120      | 120           |
| Star Rating                                    | 3.0     | 3.0     | 3.1           | 3.2      | 3.1           |
| Typical number of 150mm outlets                | 5 to 9  | 7 to 11 | 9 to 14       | 10 to 15 | 10 to 20      |
| Dimensions                                     |         |         |               |          |               |
| Length (mm)                                    | 845     | 845     | 895           | 895      | 895           |
| Width (mm)                                     | 350     | 350     | 475           | 475      | 475           |
| Height (mm)                                    | 620     | 620     | 670           | 670      | 670           |
| Weight (kg)                                    | 47      | 51      | 68            | 70       | 73            |
| Duct Connections supply and return             | 300     | 300     | 350           | 350      | 350           |

| Bonaire MB4 Series<br>4 Star Rated Gas Heaters | MB4-14  | MB4-20  | MB4-25  | MB4-30  | MB4-35                     |
|--|---------|---------|---------|---------|----------------------------|
| Gas Type                                       | Natural | Natural | Natural | Natural | Natural                    |
| Capacity                                       |         |         |         |         | Internal only              |
| Heat output kW/Hr (nominal)                    | 14      | 20      | 25      | 30      | 35                         |
| Airflow @100pa                                 | 570     | 620     | 870     | 870     | 950                        |
| MegaJoules                                     | 60      | 80      | 100     | 120     | 140                        |
| Star Rating                                    | 4.0     | 4.5     | 4.1     | 4.6     | 4.5                        |
| Typical number of 150mm outlets                | 5 to 9  | 7 to 11 | 8 to 14 | 8 to 15 | 8 to 20                    |
| Dimensions                                     |         |         |         |         |                            |
| Length (mm)                                    | 840     | 840     | 895     | 895     | 895                        |
| Width (mm)                                     | 350     | 350     | 475     | 475     | 540                        |
| Height (mm)                                    | 620     | 620     | 670     | 670     | 660                        |
| Weight (kg)                                    | 42      | 45      | 57      | 60      | 85                         |
| Duct Connections supply and return             | 300     | 300     | 350     | 350     | Supply: 400<br>Return: 350 |

| Bonaire MB5 Series<br>5 Star Rated Non Condensing<br>Gas Heaters | MB5NC-15 | MB5NC-21                | MB5NC-30                | MB5NC-35              |
|--|----------|-------------------------|-------------------------|-----------------------|
| Gas Type   | Natural  | Natural<br>LPG to order | Natural<br>LPG to order | Natural               |
| Capacity   |          |                         |                         | Internal Only         |
| Heat output kW/Hr (nominal)                                      | 15       | 21                      | 30                      | 35                    |
| Airflow @100pa   | 600      | 690                     | 965                     | 1040                  |
| MegaJoules   | 60       | 80                      | 120                     | 140                   |
| Star Rating  | 5.0      | 5.2                     | 5.6                     | 5.8                   |
| Typical number of 150mm outlets                                  | 5 to 9   | 7 to 11                 | 8 to 15                 | 8 to 20               |
| Dimensions   |          |                         |                         |                       |
| Length (mm)  | 845      | 845                     | 894                     | 894                   |
| Width (mm)   | 350      | 350                     | 476                     | 539                   |
| Height (mm)  | 618      | 618                     | 658                     | 658                   |
| Weight (kg)  | 47       | 50                      | 70                      | 85                    |
| Duct Connections supply and return                               | 300      | 300                     | 350                     | Supply 400 return 350 |

Disclaimer: Airflow testing @100pa has a testing tolerance of ±5%

## Bonaire Specifications

| Bonaire MB6 Series<br>6 Star Rated Gas Heaters | MB6-23  | MB6-31  | MB6-35                |
|--|---------|---------|-----------------------|
| Gas Type                                       | Natural | Natural | Natural               |
| Capacity                                       |         |         | Internal Only         |
| Heat output kW/Hr (nominal)                    | 23      | 31      | 35                    |
| Airflow @100pa                                 | 610     | 830     | 900                   |
| MegaJoules                                     | 80      | 120     | 140                   |
| Star Rating                                    | 6.0     | 6.0     | 6.0                   |
| Typical number of 150mm outlets                | 7 to 11 | 8 to 15 | 8 to 20               |
| Dimensions                                     |         |         |                       |
| Length (mm)                                    | 1074    | 1124    | 1124                  |
| Width (mm)                                     | 350     | 476     | 539                   |
| Height (mm)                                    | 618     | 658     | 658                   |
| Weight (kg)                                    | 66      | 85      | 96                    |
| Duct Connections supply and return             | 300     | 350     | Supply 400 return 350 |

| Bonaire Rhino<br>MBR3 & MBR4 Series | MBR3-20 | MBR3-30  | MBR4-20 | MBR4-30  |
|-------------------------------------|---------|----------|---------|----------|
| Gas Type                            | Natural | Natural  | Natural | Natural  |
| Capacity                            |         |          |         |          |
| Heat output kW/Hr (nominal)         | 20      | 30       | 20      | 30       |
| Airflow @100pa                      | 630     | 820      | 630     | 820      |
| MegaJoules                          | 80      | 120      | 80      | 120      |
| Star Rating                         | 3.0     | 3.2      | 4.5     | 4.4      |
| Typical number of 150mm outlets     | 7 to 11 | 10 to 15 | 7 to 11 | 10 to 15 |
| Dimensions                          |         |          |         |          |
| Length (mm)                         | 915     | 1030     | 915     | 1030     |
| Width (mm)                          | 390     | 555      | 390     | 555      |
| Height* (mm)                        | 613     | 648      | 613     | 648      |
| Weight (kg)                         | 50      | 70       | 50      | 70       |
| Duct Connections supply and return  | 300     | 350      | 300     | 350      |

\*add 85mm for top mounted flue

| Bonaire Rhino<br>MBR5 NC Series    | MBR5NC-21 | MBR5NC-30 |
|------------------------------------|-----------|-----------|
| Gas Type                           | Natural   | Natural   |
| Capacity                           |           |           |
| Heat output kW/Hr (nominal)        | 21        | 30        |
| Airflow @100pa                     | 660       | 920       |
| MegaJoules                         | 80        | 120       |
| Star Rating                        | 5.2       | 5.6       |
| Typical number of 150mm outlets    | 7 to 11   | 8 to 15   |
| Dimensions                         |           |           |
| Length (mm)                        | 908       | 1023      |
| Width (mm)                         | 390       | 555       |
| Height (mm)                        | 661       | 648       |
| Weight (kg)                        | 53        | 68        |
| Duct Connections supply and return | 300       | 350       |

Disclaimer: Airflow testing @100pa has a testing tolerance of ±5%

# Bonaire Optima Dual Cycle Systems Technical Specifications

| Model                         | Indoor Unit  | OPTIMA OAO12ID | OPTIMA OAO14ID | OPTIMA OAO17ID      | OPTIMA OAO17ID     | OPTIMA OAO20ID     |
|-------------------------------|--------------|----------------|----------------|---------------------|--------------------|--------------------|
|                               | Outdoor Unit | OPTIMA OAO12OD | OPTIMA OAO14OD | OPTIMA OAO17OOD 1PH | OPTIMA OAO17OD 3PH | OPTIMA OAO20OD 3PH |
| <b>Performance</b>            |              |                |                |                     |                    |                    |
| Rated Capacity (kW)           |              | 12             | 13.6           | 16.6                | 17                 | 19.6               |
| Rated Input (kW)              |              | 3.84           | 4.35           | 4.71                | 5.44               | 6.11               |
| AEER                          |              | 3.13           | 3.13           | 3.15                | 3.13               | 3.13               |
| Compressor                    |              | Scroll         | Scroll         | Scroll              | Scroll             | Scroll             |
| Sound Power Level (dBa)       |              | 65             | 65             | 66                  | 66                 | 66                 |
| <b>Electrical Data</b>        |              |                |                |                     |                    |                    |
| Power Supply (V-ph-Hz)        |              | 240/1/50       | 240/1/50       | 240/1/50            | 415/3/50           | 415/3/50           |
| Rated Current (Amps)          |              | 15             | 18             | 21                  | 7.9                | 10.7               |
| <b>Refrigeration Data</b>     |              |                |                |                     |                    |                    |
| Refrigerant Type              |              | R410A          |                |                     |                    |                    |
| Pipe Sizes                    | Suction Line | 9.52mm (3/8")  | 9.52mm (3/8")  | 9.52mm (3/8")       | 9.52mm (3/8")      | 12.7mm (1/2")      |
|                               | Liquid Line  | 19.05mm (3/4") | 19.05mm (3/4") | 19.05mm (3/4")      | 19.05mm (3/4")     | 22.22mm (7/8")     |
| Maximum pipe length           | m            | 50             | 50             | 50                  | 50                 | 50                 |
| Max difference in level       | m            | 30             | 30             | 30                  | 30                 | 30                 |
| Refrigerant Pre Charge length | m            | 10             | 10             | 10                  | 10                 | 10                 |
| <b>Dimensions</b>             |              |                |                |                     |                    |                    |
| Outdoor Unit Dimensions WxHxD | mm           | 754x870x754    | 754x870x754    | 840x1070x840        | 840x1070x840       | 900x1070x900       |
| Indoor Unit Dimensions WxHxD  | mm           | 555x548x1070   | 555x548x1070   | 555x648x1156        | 555x648x1156       | 555x648x1256       |
| Outdoor Unit Weight           | kg           | 117            | 117            | 130                 | 130                | 150                |
| Indoor Unit Weight            | kg           | 34             | 34             | 40                  | 40                 | 45                 |
| Duct Spigots Supply/Return    | mm           | 450/450        | 450/450        | 500/500             | 500/500            | 500/500            |

| Bonaire Ducted Gas Heater Matching Chart (Maximum Recommended Add-on Cooling Capacity) |    |          |                |          |          |          |
|--|----|----------|----------------|----------|----------|----------|
| Cooling Capacity   | kW | 12       | 13.6           | 16.6     | 17       | 19.6     |
| MB4 Series   |    | MB4-25   | MB4-25, MB4-30 | MB4-35   | MB4-35   | -        |
| MB5 NC Series  |    | MB5NC-21 | MB5NC-30       | MB5NC-30 | MB5NC-30 | MB5NC-35 |
| MB6 Series   |    | MB6-23   | MB6-31         | MB6-31   | MB6-31   | MB6-35   |



# Optima L-Series High Wall Split Technical Specifications

| Model                               | Indoor Unit                           | OHL-25ID              | OHL-35ID              | OHL-50ID              | OHL-70ID                | OHL-82ID             |
|-------------------------------------|---------------------------------------|-----------------------|-----------------------|-----------------------|-------------------------|----------------------|
|                                     | Outdoor Unit                          | OHL-25OD              | OHL-35OD              | OHL-50OD              | OHL-70OD                | OHL-82OD             |
| Capacity                            | Cooling (kW) (min-max)                | 25 (12-28)            | 35 (13-37)            | 5 (1.5-5.5)           | 7 (2.0-7.5)             | 8.2 (2.55-9.0)       |
|                                     | Heating kW (min-max)                  | 29 (13-32)            | 3.7 (14-4.0)          | 5.2 (1.6-5.6)         | 7.5 (2.0-8.0)           | 9.0 (2.85-10.5)      |
| Power Input                         | Cooling (W)                           | 670                   | 940                   | 1520                  | 2140                    | 2270                 |
|                                     | Heating (W)                           | 780                   | 1000                  | 1590                  | 2290                    | 2500                 |
| Max Current                         | Cooling (A)                           | 5.6                   | 6.8                   | 8.0                   | 13.0                    | 15.0                 |
|                                     | Heating (A)                           | 6.3                   | 8.1                   | 9.5                   | 16.0                    | 18.0                 |
| ZERL Star Rating (Hot/Average/Cold) | Cooling                               | 3/3/3                 | 3.5/3/3               | 2.5/2/2.5             | 2.5/2/2.5               | 2.5/2.5/3            |
|                                     | Heating                               | 3/2/1.5               | 3/2/1.5               | 2/2/1.5               | 2.5/2/1.5               | 1.5/2/2.5            |
| Annualised Energy Efficiency Ratio  | Annualised Energy Efficiency Ratio    | 4.0186                | 4.1036                | 3.5589                | 3.4742                  | 3.612334802          |
|                                     | Annualised Coefficient of Performance | 4.2982                | 4.2973                | 3.2932                | 3.6451                  | 3.6                  |
| Indoor Unit                         | Fan Motor                             | 5 Gear, Quiet, Auto   | 5 Gear, Quiet, Auto   | 5 Gear, Quiet, Auto   | 5 Gear, Quiet, Auto     | 5 Gear, Quiet, Auto  |
|                                     | Airflow (L/s)                         | 152                   | 166                   | 278                   | 389                     | 440                  |
|                                     | Sound Pressure Level (dB(A))          | 39                    | 40                    | 47                    | 48                      | 51                   |
|                                     | Sound Power Level (dB(A))             | 51                    | 53                    | 59                    | 61                      | 63                   |
|                                     | Dimensions (WxDxH)(mm)                | 810x195x280           | 855x200x280           | 900x210x310           | 1115x248x336            | 1342x275x365         |
|                                     | Net/Gross weight (kg)                 | 9.3/11.3              | 10/12.2               | 11.2/13.7             | 16/19.5                 | 21.5/25.5            |
| Outdoor Unit                        | Sound Pressure Level (dB(A))          | 52                    | 53                    | 54                    | 55                      | 58                   |
|                                     | Sound Power Level (dB(A))             | 61                    | 62                    | 64                    | 65                      | 72                   |
|                                     | Net Dimension (WxDxH)(mm)             | 800x275x553           | 800x275x553           | 890x353x697           | 890x353x697             | 920x385x762          |
|                                     | Net/Gross weight (kg)                 | 27.5/30.5             | 30/33                 | 45.5/49.5             | 45/49                   | 57.5/62.0            |
| Electrical                          | Power V/Ph/Hz                         | 1ph/220-240V/50Hz     | 1ph/220-240V/50Hz     | 1ph/220-240V/50Hz     | 1ph/220-240V/50Hz       | 1ph/220-240V/50Hz    |
|                                     | Breaker size (A)                      | 20                    | 20                    | 25                    | 25                      | 25                   |
|                                     | Interconnects (mm <sup>2</sup> )      | 4G1.5                 | 4G1.5                 | 4G1.5                 | 4G1.5                   | 4G1.5                |
| Refrigerant                         | R32 (kg)                              | 0.65                  | 0.79                  | 1.0                   | 1.3                     | 1.5                  |
| Pipe Size                           | Liquid pipe size (mm)                 | 6.35 (1/4)            | 6.35 (1/4)            | 6.35 (1/4)            | 6.35 (1/4)              | 6.35 (1/4)           |
|                                     | Gas pipe size (mm)                    | 9.52 (3/8)            | 9.52 (3/8)            | 12.7 (1/2)            | 12.7 (1/2)              | 15.88 (5/8)          |
| Installation                        | Pre-charge (m)                        | 10                    | 10                    | 10                    | 10                      | 10                   |
|                                     | Max distance (LxH)                    | 15/10                 | 15/10                 | 20/15                 | 20/15                   | 20/15                |
|                                     | Additional charge (g/m)               | 20g                   | 20g                   | 20g                   | 20g                     | 20g                  |
| Ambient temp range                  | Set temperature range oC              | 16-30                 | 16-30                 | 16-30                 | 16-30                   | 16-30                |
|                                     | Cooling oC                            | 21°C -32°C/0°C-+46°C  | 21°C -32°C/0°C-+46°C  | 21°C -32°C/0°C-+46°C  | 21°C -32°C/0°C-+46°C    | 21°C -32°C/0°C-+46°C |
| Heating oC                          | 15°C -27°C/-10°C-+24°C                | 15°C -27°C/10°C-+24°C | 15°C -27°C/10°C-+24°C | 15°C -27°C/10°C-+24°C | 15°C -27°C/ -10°C-+24°C |                      |
| <b>Feature</b>                      |                                       |                       |                       |                       |                         |                      |
| Quiet                               |                                       | Y                     | Y                     | Y                     | Y                       | Y                    |
| WiFi Option                         |                                       | Y                     | Y                     | Y                     | Y                       | Y                    |
| Clocking                            |                                       | 24H                   | 24H                   | 24H                   | 24H                     | 24H                  |
| Voice Control                       |                                       | Amazon, Google        | Amazon, Google        | Amazon, Google        | Amazon, Google          | Amazon, Google       |



The leaders in heating and cooling

For further information please phone:

**VIC** (03) 8795 2400

**SA** (08) 8307 5100

**WA** (08) 9454 1010

**NSW** (02) 6882 2733

[bonaire.com.au](http://bonaire.com.au)

A CLIMATE TECHNOLOGIES BRAND ABN 13 001 418 042. 26 Nylex Avenue, Salisbury 5108.

Bonaire is a registered trademark of Climate Technologies. Wi-Fi is a registered trademark of Wi-Fi Alliance. In the interest of continued product improvement, Bonaire reserves the right to alter specifications without notice E. & O.E. Colours represented are as accurate as the printing process will allow. Images used, are for illustration purposes only. March 2022

